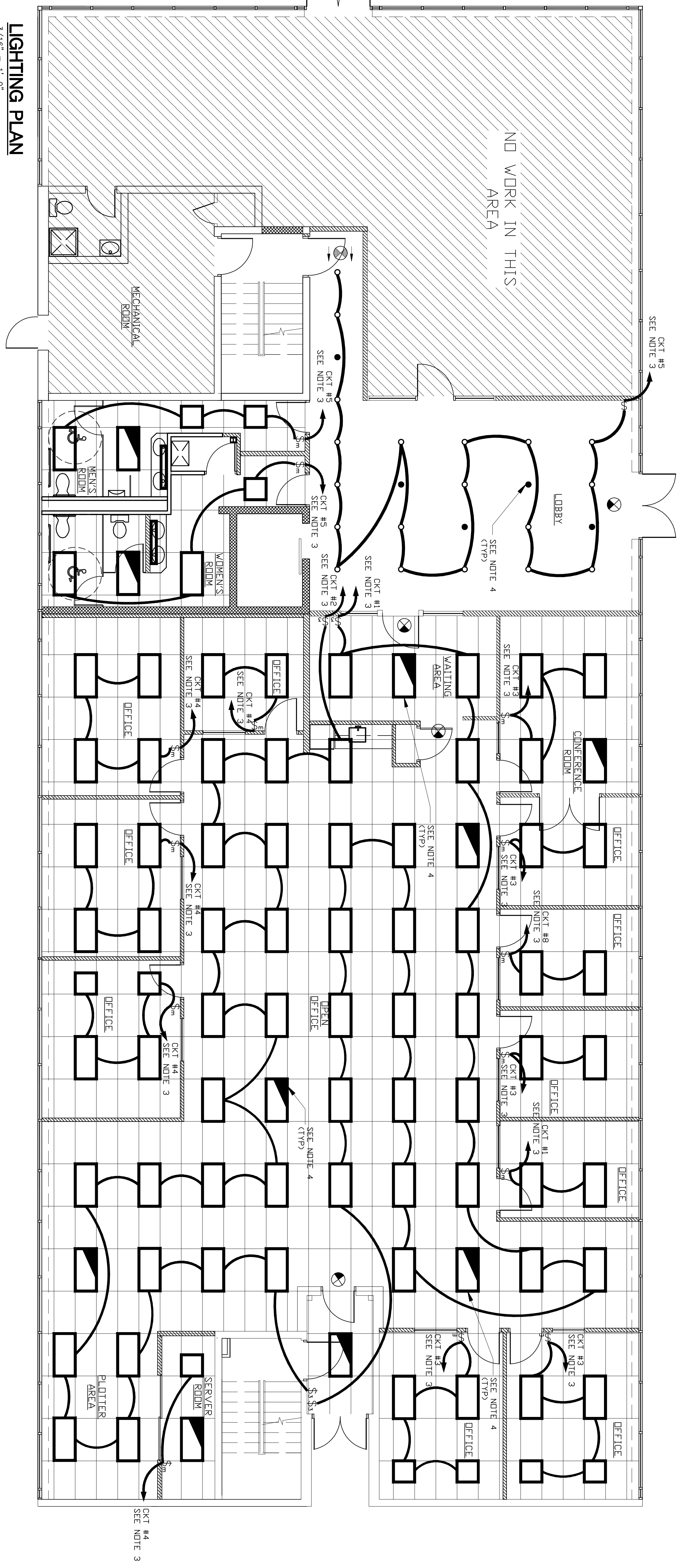


POWER AND TELEDATA PLAN
3/16" = 1'-0"



LIGHTING PLAN
3/16" = 1'-0"

- POWER & TELEPHONE LEGEND**
- ⊖ NEW OUTLET RECEPTACLE
 - ⊖ NEW DEDICATED RECEPTACLE
 - ⊖ L5-20R DEDICATED RECEPTACLE
 - ⊖ TELEPHONE/DATA OUTLET
- FIRE ALARM LEGEND**
- ⊖ HEAT DETECTOR
 - ⊖ SMOKE DETECTOR
 - ⊖ FIRE ALARM MANUAL PULL STATION
 - ⊖ FIRE BELL

POWER & TELEPHONE CONSTRUCTION

1. ALL NEW ELECTRICAL OUTLET COVERS AND SWITCHPLATES SHALL MATCH BUILDING STANDARDS.
2. RECEPTACLE AND TEL/DATA OUTLETS SHALL BE 18" ABOVE FINISHED FLOOR.
3. CONTRACTOR SHALL RUN NEW CIRCUITS FROM POWER PANEL INDICATED ON DRAWING. EXACT CIRCUIT NUMBERS SHALL BE SHOWN FOR REFERENCE ONLY. EXACT CIRCUIT NUMBERS SHALL BE SHOWN FOR REFERENCE ONLY. EXACT CIRCUIT NUMBERS SHALL BE SHOWN FOR REFERENCE ONLY. EXACT CIRCUIT NUMBERS SHALL BE SHOWN FOR REFERENCE ONLY.
4. CONTRACTOR SHALL PROVIDE AND INSTALL A SINGLE GANG BOX WITH A 1" CONDUIT ABOVE THE SUSPENDED CEILING FOR TELEDATA OUTLETS.
5. CONTRACTOR TO PROVIDE AND INSTALL ALL NEW BACK BOXES, DEVICES AND CAT 6 CABLE FOR ALL NEW TELE/DATA WALL OUTLETS BACK TO ROOM BY ALTERN. INDICATED ON THE PLAN. ALL CONNECTIONS IN SERVER ROOM SHALL BE IN CONDUIT DISTRIBUTION WITHIN OFFICE AREA TO BE AC CABLE THE RECEPTACLES AND FURNITURE WITH CIRCUIT IDENTIFICATION MARKINGS.
6. ALL NEW POWER RUNS FROM POWER PANELS TO OFFICE AREAS SHALL BE IN CONDUIT DISTRIBUTION WITHIN OFFICE AREA TO BE AC CABLE THE RECEPTACLES AND FURNITURE WITH CIRCUIT IDENTIFICATION MARKINGS.
7. CONTRACTOR SHALL RUN A CIRCUIT TO THE POWER POLE FOR CONNECTION TO FURNITURE, COORDINATE WITH ALTRIAN ARCHITECT.
8. CONTRACTOR SHALL ALSO PROVIDE A SPARE FEED FROM CIRCUIT #19 AS SPARE FOR CONNECTION TO FUTURE POWER POLE. LEAVE 25 FT OF SPARE FEED IN THIS AREA FOR FINAL CONNECTIONS TO THE OFFICE FURNITURE IN THIS AREA. FOR FINAL CONNECTIONS TO FURNITURE, COORDINATE WITH ALTRIAN ARCHITECT.
9. TWO DEDICATED CIRCUITS FOR SERVER ROOM EQUIPMENT RECEPTACLES SHALL BE INSTALLED IN SERVER ROOM. CONTRACTOR SHALL PROVIDE 15-20R CORB CAP, COORDINATE WITH ALTRIAN IF REPRESENTATIVE FOR EXACT LOCATIONS BEFORE BEGINNING WORK IN SERVER ROOM.
10. DEDICATED CIRCUIT TO AC UNIT SHALL BE 208V/1PH/3W 20 AMP CIRCUIT. CONTRACTOR SHALL PROVIDE AND INSTALL A SINGLE GANG BOX WITH A 1" CONDUIT ABOVE THE SUSPENDED CEILING FOR AC UNIT. CONTRACTOR SHALL PROVIDE AND INSTALL A SINGLE GANG BOX WITH A 1" CONDUIT ABOVE THE SUSPENDED CEILING FOR AC UNIT. CONTRACTOR SHALL PROVIDE AND INSTALL A SINGLE GANG BOX WITH A 1" CONDUIT ABOVE THE SUSPENDED CEILING FOR AC UNIT.
11. PROVIDE TWO TEMPERATURE ALERT MODEL 3.5 (TM-510X) AND TURN OVER TO ALTRIAN FOR INSTALLATION BY OWNER AS PER DRAWING.
12. NEPA 12V ALTRIAN SYSTEM STATIONS AND DETECTORS ARE SHOWN FOR REFERENCE ONLY.
13. PROVIDE FIRE RECEPTACLE WHERE INDICATED AND MOUNT AT COUNTER HEIGHT. (TYPICAL 3)
14. ALL ELECTRICAL WORK TO BE IN ACCORDANCE WITH NFPA 70, NATIONAL ELECTRICAL CODE (NEC), 2005 EDITION AS WELL AS ALL OTHER APPLICABLE CODES AND LOCAL ORDINANCES.

LIGHTING LEGEND

- ▬ 2'x4' FLUORESCENT LIGHT FIXTURE (MAX 128 WATTS)
- ▬ 2'x4' FLUORESCENT LIGHT FIXTURE (MAX 128 WATTS)
- ▬ 2'x2' FLUORESCENT LIGHT FIXTURE (MAX 32 WATTS)
- RECESSED LIGHTING FIXTURE (MAX 100 WATTS)
- RECESSED EMERGENCY LIGHTING FIXTURE WITH BATTERY BACKUP (MAX 100 WATTS)
- ⊖ SINGLE POLE LIGHT SWITCH WITH MOTION DETECTOR
- ⊖ 3-WAY SINGLE POLE LIGHT SWITCH
- ⊖ EXIT LIGHT SHOWN AREA INDICATES FACEPAGE FROM DRAWING (INDICATES DIRECTION OF EGRESS)

LIGHTING NOTES

1. ALL LIGHTING SHALL BE INSTALLED IN ACCORDANCE WITH THE NATIONAL ELECTRICAL CODE. LIGHTING FIXTURES ARE SHOWN IN THEIR APPROXIMATE POSITION. CONTRACTOR SHALL VERIFY THE POSITION OF THE LIGHTING FIXTURES AND MAKE ANY NECESSARY ADJUSTMENTS TO THE LIGHTING FIXTURES TO ILLUMINATE THE AREA OF ENTRY AND THE CONSTRUCTION MANAGER APPROVES SUCH LOCATION.
2. ALL LIGHTING FIXTURES SHALL BE GROUNDED AS PER THE NATIONAL ELECTRICAL CODE. GROUNDS SHALL BE A GREEN 1/2" #12 AWG. ELEVATION. GROUND GROUNDS SHALL BE A GREEN 1/2" #12 AWG. ELEVATION. GROUND GROUNDS SHALL BE A GREEN 1/2" #12 AWG. ELEVATION.
3. CONTRACTOR SHALL RUN NEW CIRCUITS FROM POWER PANEL INDICATED ON DRAWING. EXACT CIRCUIT NUMBERS SHALL BE SHOWN FOR REFERENCE ONLY. EXACT CIRCUIT NUMBERS SHALL BE SHOWN FOR REFERENCE ONLY. EXACT CIRCUIT NUMBERS SHALL BE SHOWN FOR REFERENCE ONLY.
4. CONTRACTOR SHALL PROVIDE AND INSTALL A SINGLE GANG BOX WITH A 1" CONDUIT ABOVE THE SUSPENDED CEILING FOR AC UNIT. CONTRACTOR SHALL PROVIDE AND INSTALL A SINGLE GANG BOX WITH A 1" CONDUIT ABOVE THE SUSPENDED CEILING FOR AC UNIT.
5. CONTRACTOR SHALL PROVIDE AND INSTALL A SINGLE GANG BOX WITH A 1" CONDUIT ABOVE THE SUSPENDED CEILING FOR AC UNIT. CONTRACTOR SHALL PROVIDE AND INSTALL A SINGLE GANG BOX WITH A 1" CONDUIT ABOVE THE SUSPENDED CEILING FOR AC UNIT.
6. CONTRACTOR SHALL PROVIDE AND INSTALL A SINGLE GANG BOX WITH A 1" CONDUIT ABOVE THE SUSPENDED CEILING FOR AC UNIT. CONTRACTOR SHALL PROVIDE AND INSTALL A SINGLE GANG BOX WITH A 1" CONDUIT ABOVE THE SUSPENDED CEILING FOR AC UNIT.
7. THE CONTRACTOR SHALL IDENTIFY ALL WIRING IN JUNCTION BOXES, SWITCHES, RECEPTACLES AND FURNITURE WITH CIRCUIT IDENTIFICATION MARKINGS.
8. REASON AND INSTALLATION OF ALL WIRE AND CABLE REQUIRED FOR A COMPLETE LIGHTING SYSTEM ARE THE RESPONSIBILITY OF THE GENERAL CONTRACTOR.
9. ALL SUPPLEMENTARY STEEL DETERMINED BY THE CONTRACTOR AS NECESSARY FOR THE LIGHTING SYSTEM INSTALLATION WILL BE HIS RESPONSIBILITY TO OBTAIN AND INSTALL.

WILLIAM A. WHITES A.I.A.

KEYSTONE INDUSTRIES
633 HOLLYWOOD AVENUE
FIRST FLOOR
POWER/TELEDATA AND LIGHTING PLANS

altran
PROJECT NO. 08-0449

DATE: 11/7/08
SCALE: 3/16" = 1'-0"

DRWN: KAW
CHKD: KAW
APP'D: MAM

DRAWING NUMBER: 08-0449-E-1
REV: 0